

STRETCH (POSITION PATTERN ON FABRIC WITH STRETCH GOING THIS DIRECTION, USUALLY PERPENDICULAR TO THE GRAIN/SELVAGE.)

SEAM ALLOWANCE (SEAM ALLOWANCE IS 1/2" ON ALL PIECES UNLESS OTHERWISE NOTED.)

2 1/2"



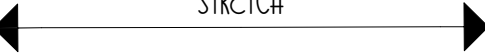
R1 C2

FRONT

CUT 2 IN OPPOSITE DIRECTIONS  
FROM MAIN FABRIC

CUT ON FOLD

STRETCH

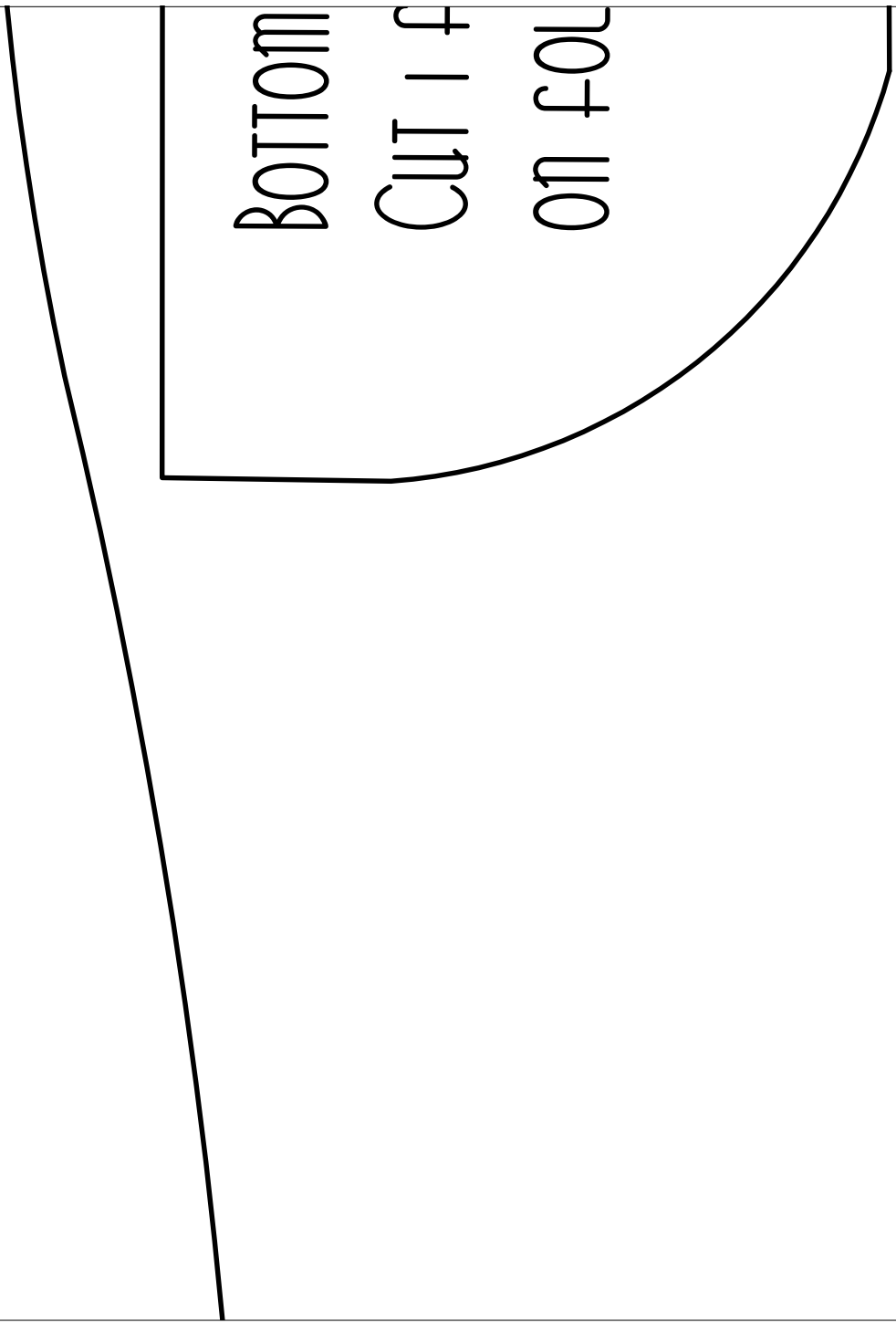


PATTERN KEY

CUT ON FOLD

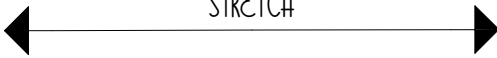
PLACE ON FOLD OF FABRIC

R2 C1



BOTTOM  
CUT 1 f  
ON fOL

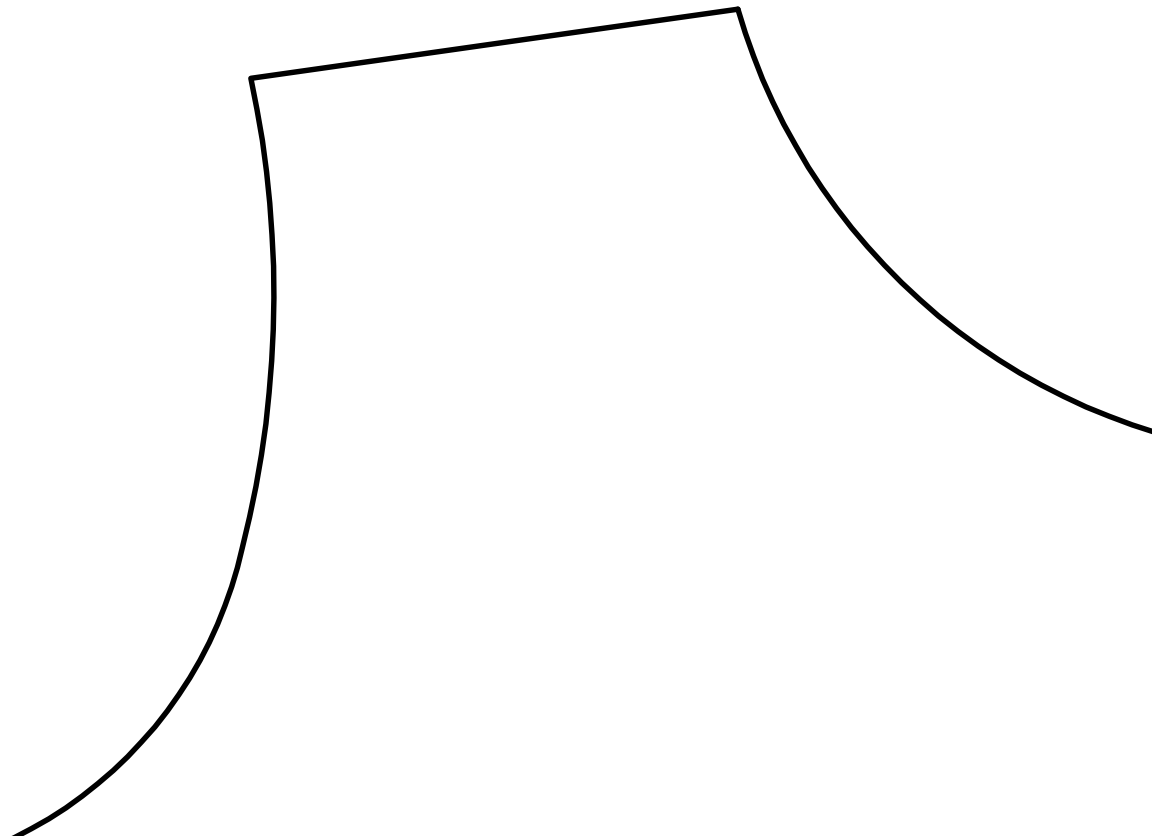
STRETCH



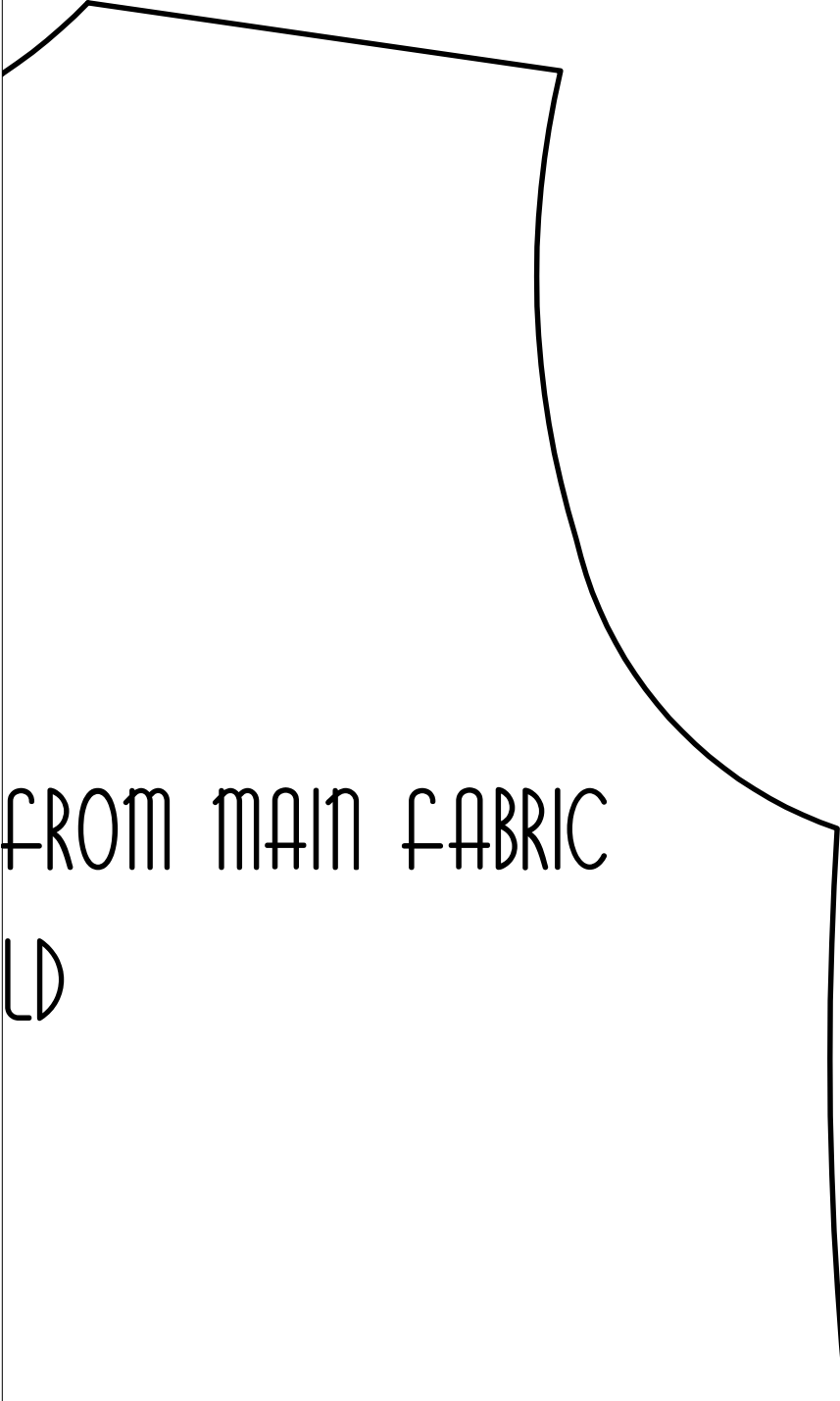
R2 C2

# THE BABY SLEEP BAG

NEWBORN TO 3 MONTHS



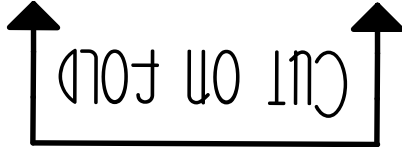
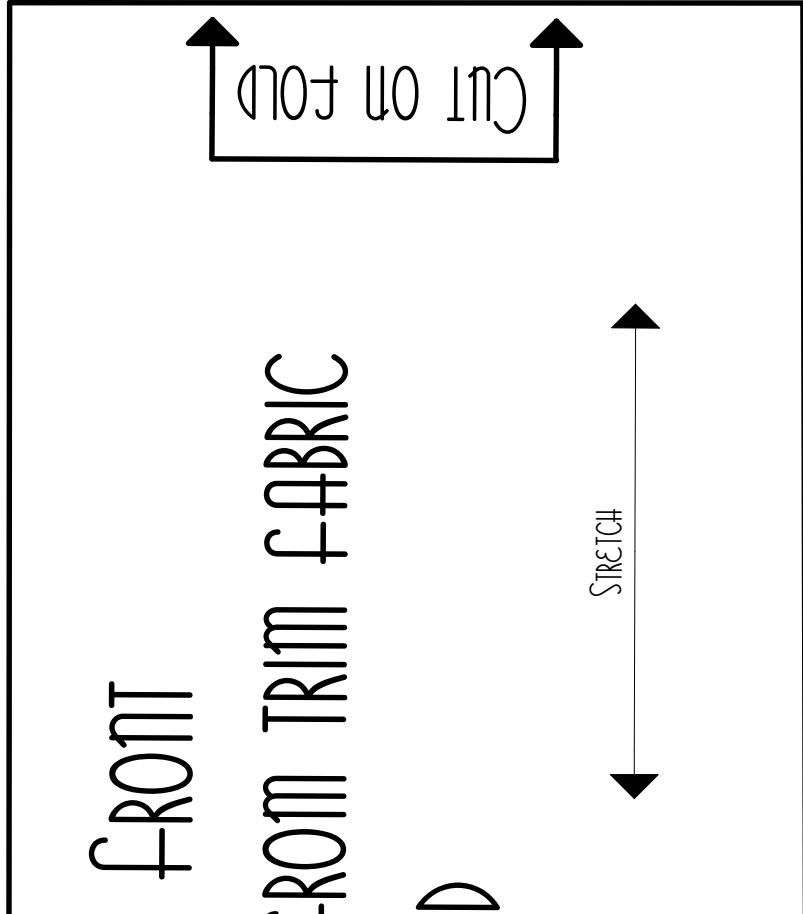
BACK  
CUT 1  
ON FO



FROM MAIN FABRIC

LD

R3 C2



CUT ON FOLD

FRONT

FROM TRIM FABRIC

D



STRETCH

