

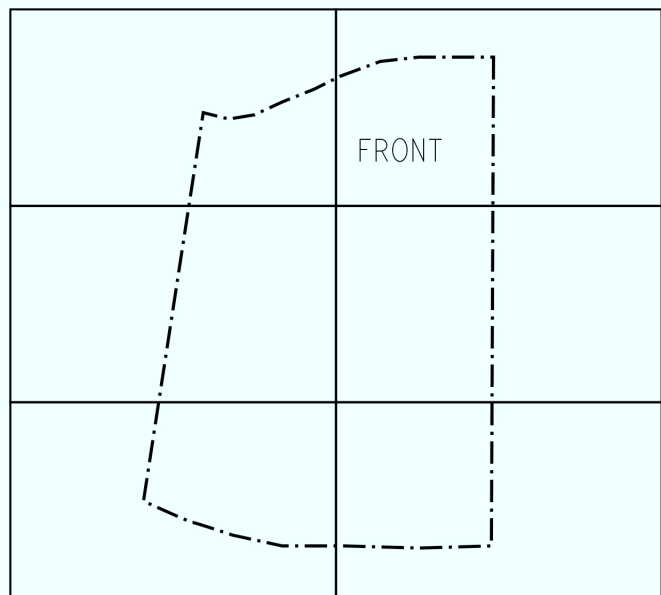
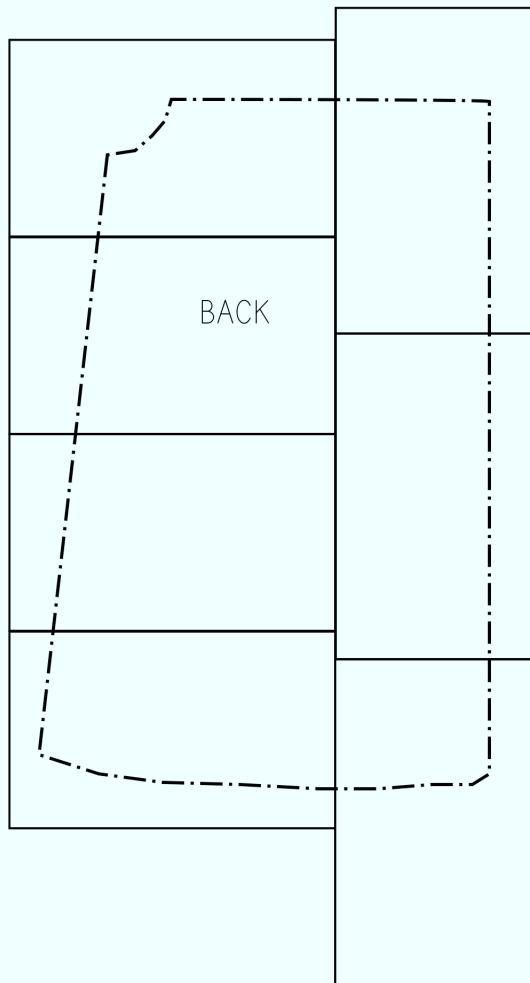
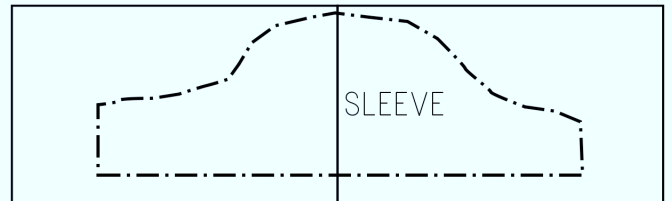
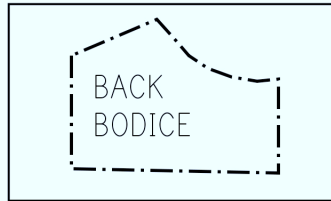
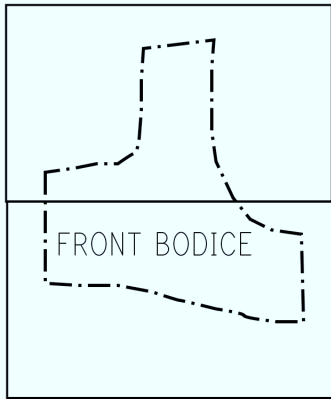
the
Pretty Blouse
pattern + instructions



by amanda fetters for sew mama sew

Pattern Piece Layout Guide

Cut out and tape pattern pieces together as shown below.
Match pattern pieces at dots.



Sizing Information

The most fitted part of the blouse is at the armpits. Everything below that is fairly free-sized. Length for all sizes is approximately 26".

Circumference at Armpit

small - 35.5

medium - 38

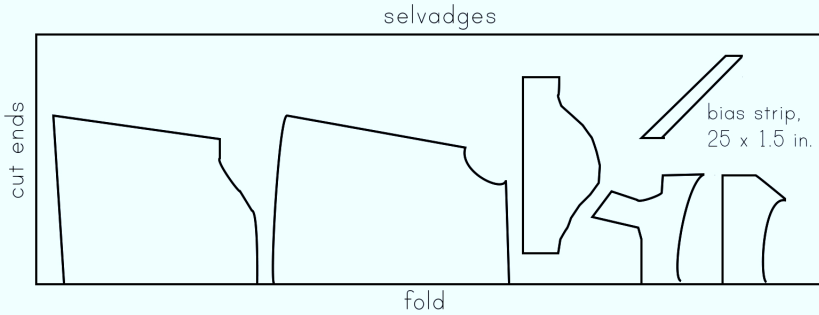
large - 39.5

IF IN DOUBT, MAKE A MUSLIN!

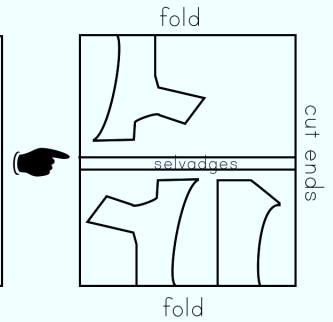
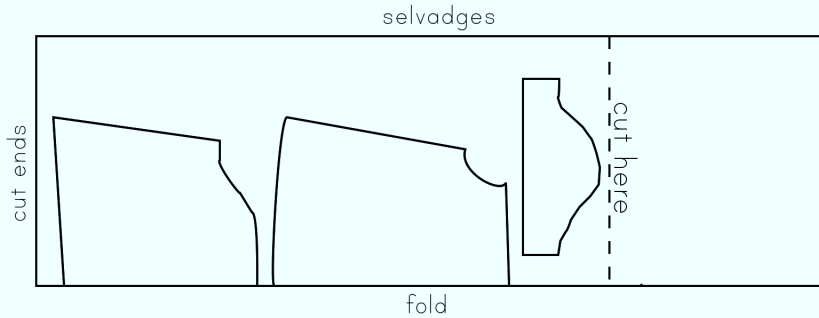
Cutting Guide

For 2 yards of 44" wide fabric:

If finishing the neck with bias tape

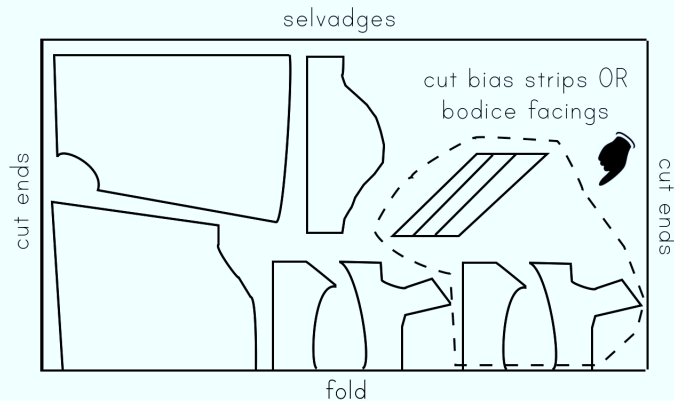


If finishing the neck with bodice facings



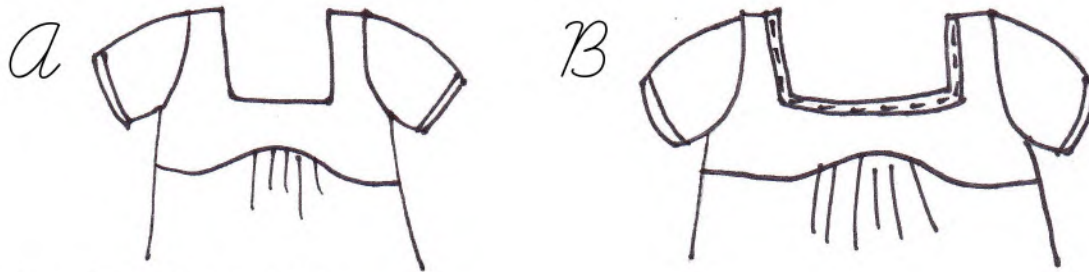
OR...

For 1.5 yards of 56" wide fabric:



Let's go!

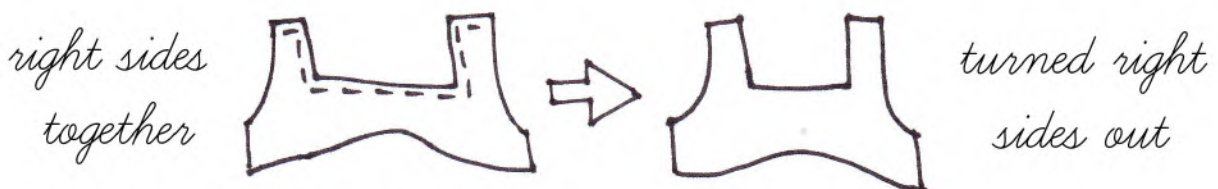
1. First you'll need to decide how you want to finish the neckline on the blouse. You've got two choices, and they're equally easy: you can make a facing (A), or you can use bias binding (B).



FOR THE FACING (A):

For this method, you'll need two front bodice pieces and two back bodice pieces. Starting with the front bodice pieces, place right sides together. Beginning at one shoulder, stitch across the shoulder, around the neckline, and across the other shoulder. Repeat with back facing pieces.

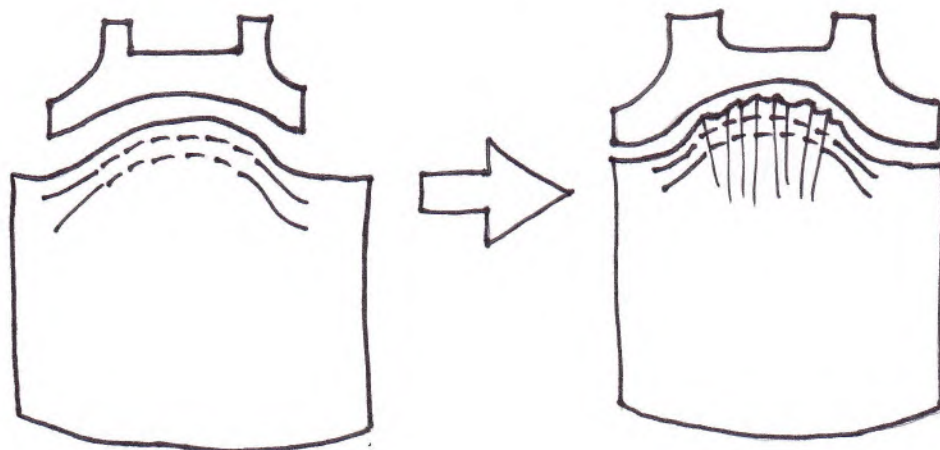
Clip the corners and turn right sides out. Press. Topstitch if desired. Baste the bottom shut; from now on, you'll treat each bodice piece as if it were just one piece of fabric.



FOR THE BIAS BINDING (B):

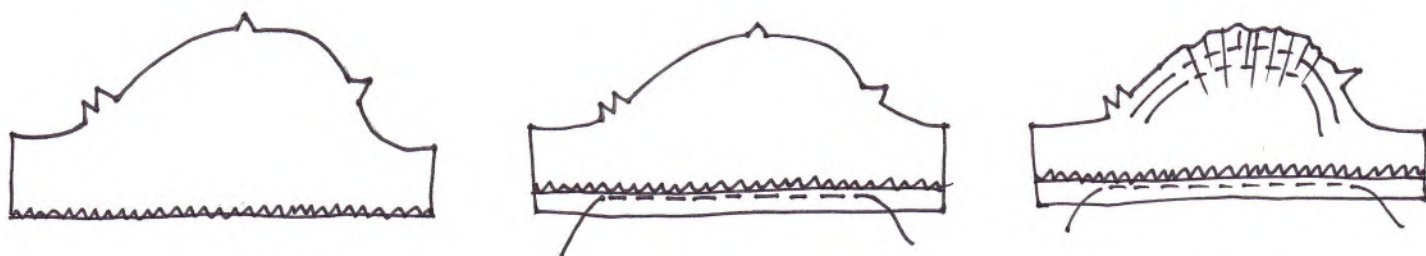
Cut a 1.5 x 20-inch strip of fabric on the bias. Iron in half wrong sides together, then fold and iron each edge in to the middle to make bias tape. Set aside; you'll finish this part later.

2. If you have cut 2 back pieces (not on the fold), sew them together at the center, right sides together. Now sew gathering stitches on front and back blouse pieces between dots. Gather to fit yokes. Sew in place.



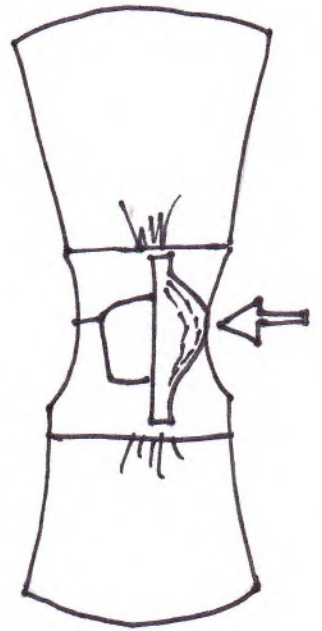
3. Sew front piece to back piece at shoulders, right sides together.

4. Zig-zag finish edge of sleeve, then turn and press 1/2 in. Repeat with remaining sleeve. Stitch sleeve hem close to the zig-zags, leaving about 2 inches unsewn at each end.



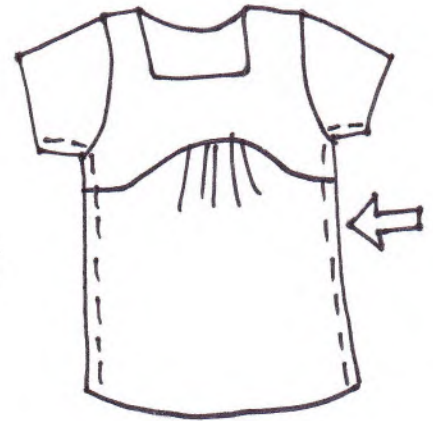
5. Sew gathering stitches on sleeves between dots. Gather to fit arm hole (it takes some finagling and eyeballing at first; keep on keepin' on). Make sure the gathers are concentrated at the top of the sleeve, so that you get a nice little puff at the shoulder.

6. Open up the blouse and lay it flat. Right sides together, match center sleeve to shoulder seam. Pin the entire sleeve in place if you like; just make sure the sleeve is gathered to fit the arm hole correctly.

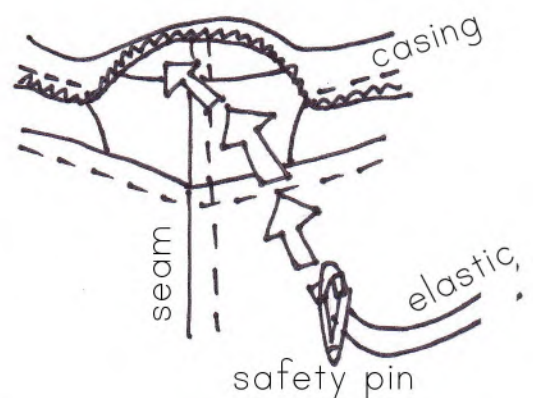


7. Starting at the shoulder seam, stitch sleeve to the front of the blouse. Return to shoulder seam and stitch sleeve to the back of the blouse. Repeat with other sleeve.

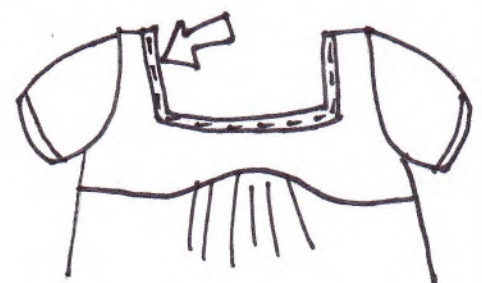
8. Bring front and back of blouse together and sew side and underarm, right sides together, being sure to match up the armpit seams.



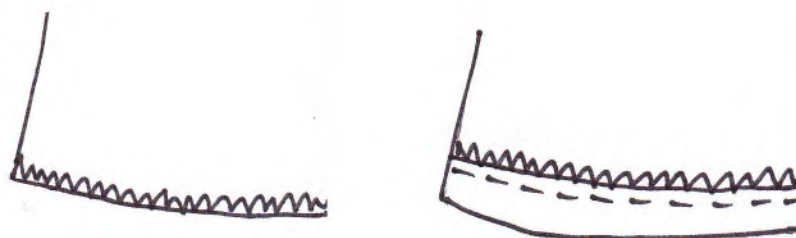
9. Cut 2 pieces of elastic 10-12 in, depending on your arm circumference. Insert elastic through openings in sleeves. Stitch elastic together at end and stitch the sleeve openings shut.



10. If you are finishing the neckline with bias binding, sew the binding to the neck, joining raw ends at center back of neck.



10. Zig-zag finish raw edge at bottom of blouse, then press up 1/2 in. and stitch.



Ta-daa!

You did it! Now put on your hot new blouse and go eat a cupcake. :)

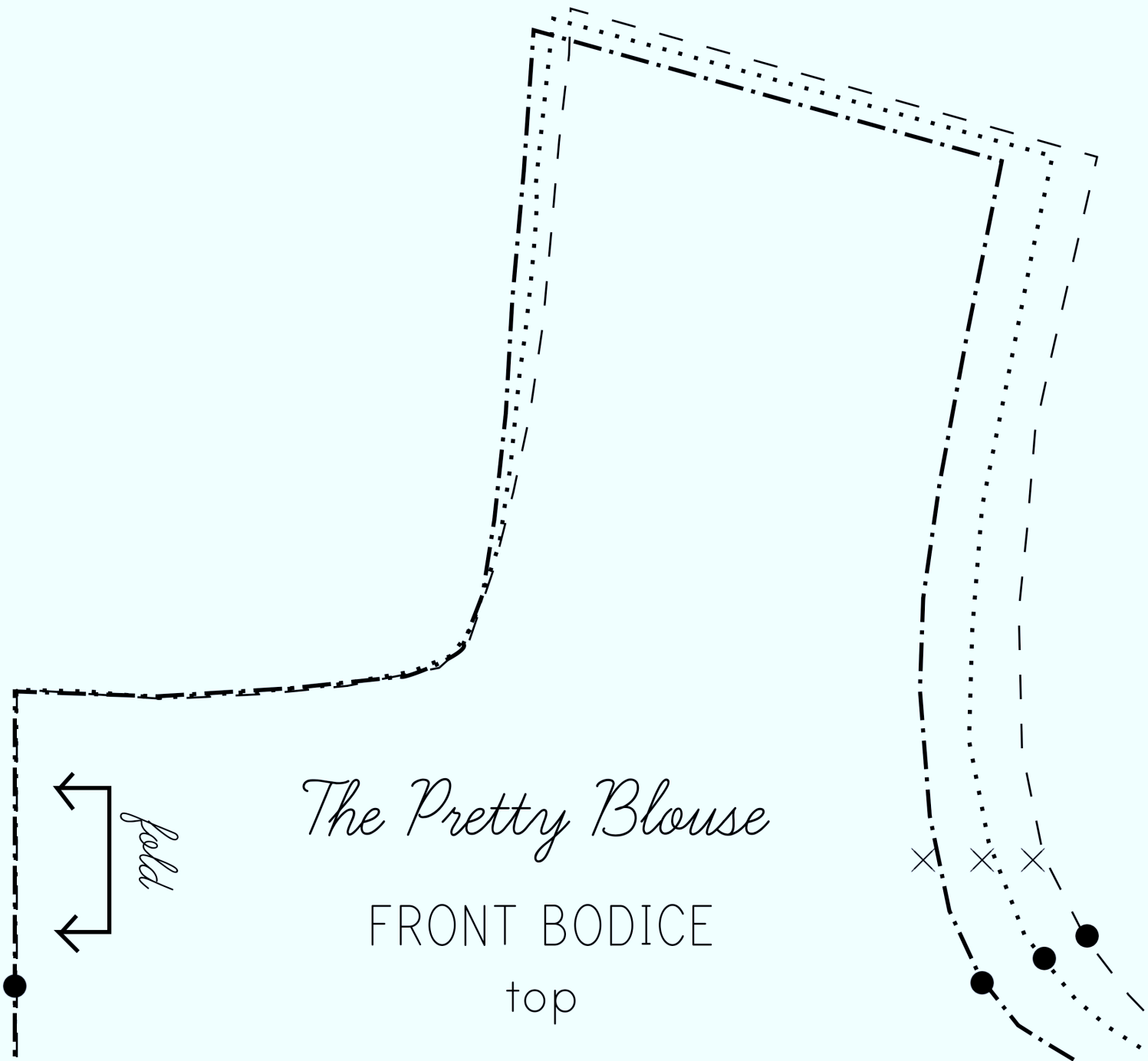
created by Amanda Feters for Sew, Mama, Sew!
<http://www.sewmamasew.com/blog2>

Terms of Use

This pattern is for personal and limited commercial use only. You may not sell, copy, or modify this pattern for commercial use. You may use this pattern to make garments to sell for your own small business. Credit for pattern design is appreciated, but not required. You may not use this pattern for factory or mass production.

Thank you for respecting these terms!

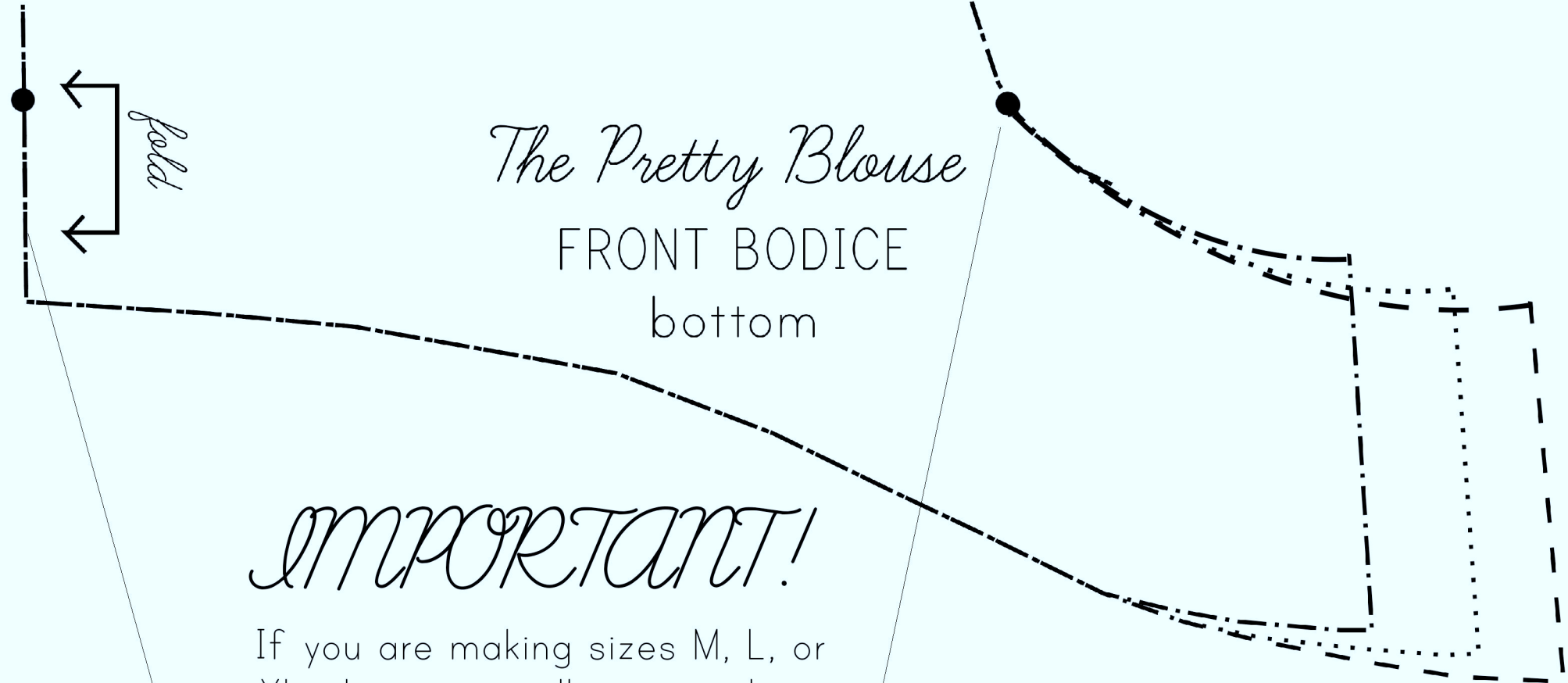
xoxo, amanda
themodernmarigold.com



The Pretty Blouse

FRONT BODICE

top



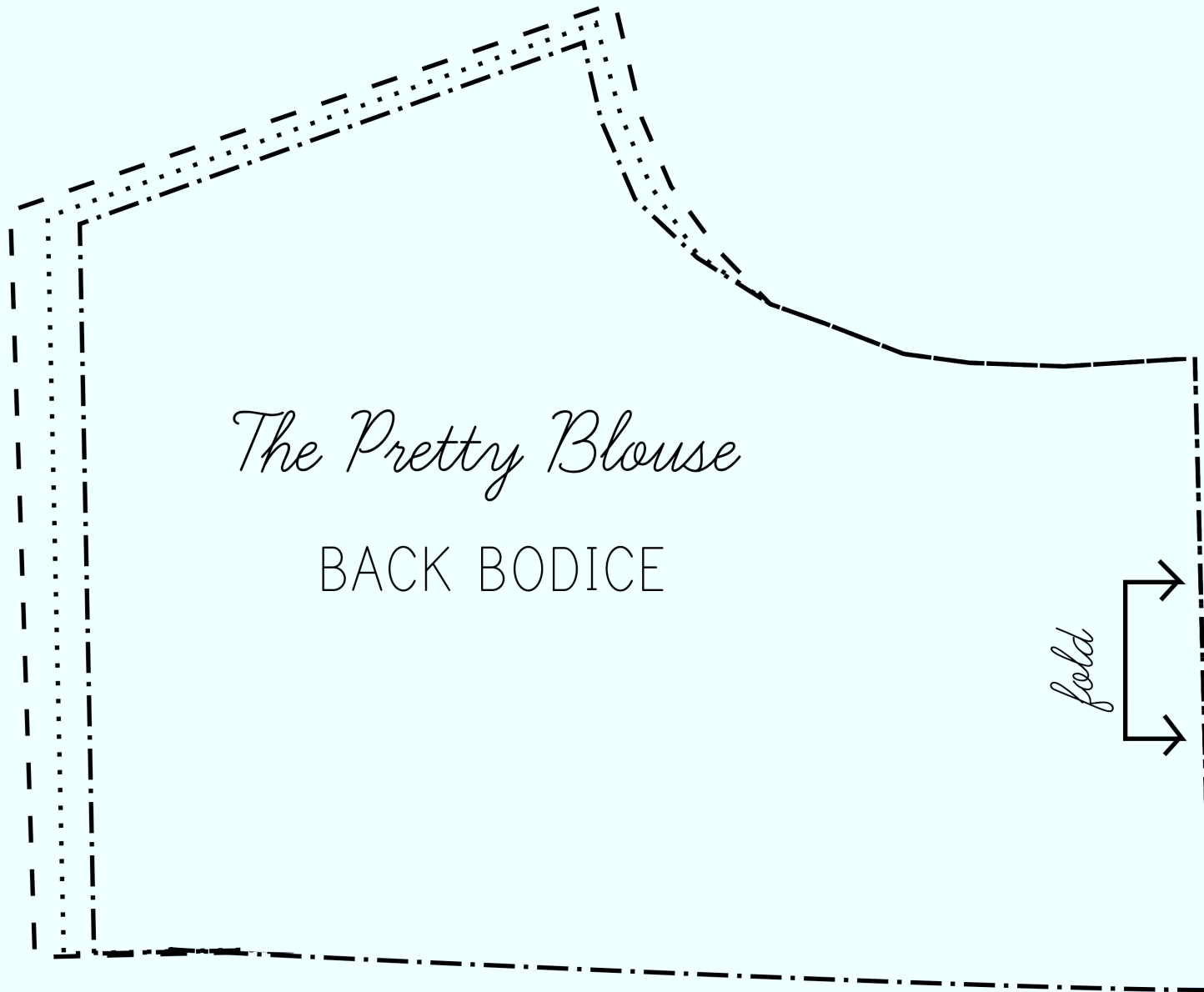
The Pretty Blouse
FRONT BODICE
bottom

IMPORTANT!

If you are making sizes M, L, or XL, this piece will not match up perfectly with the top front bodice piece.

For a proper fit, match this dot as indicated, then extend this line as needed to match the top front bodice piece.

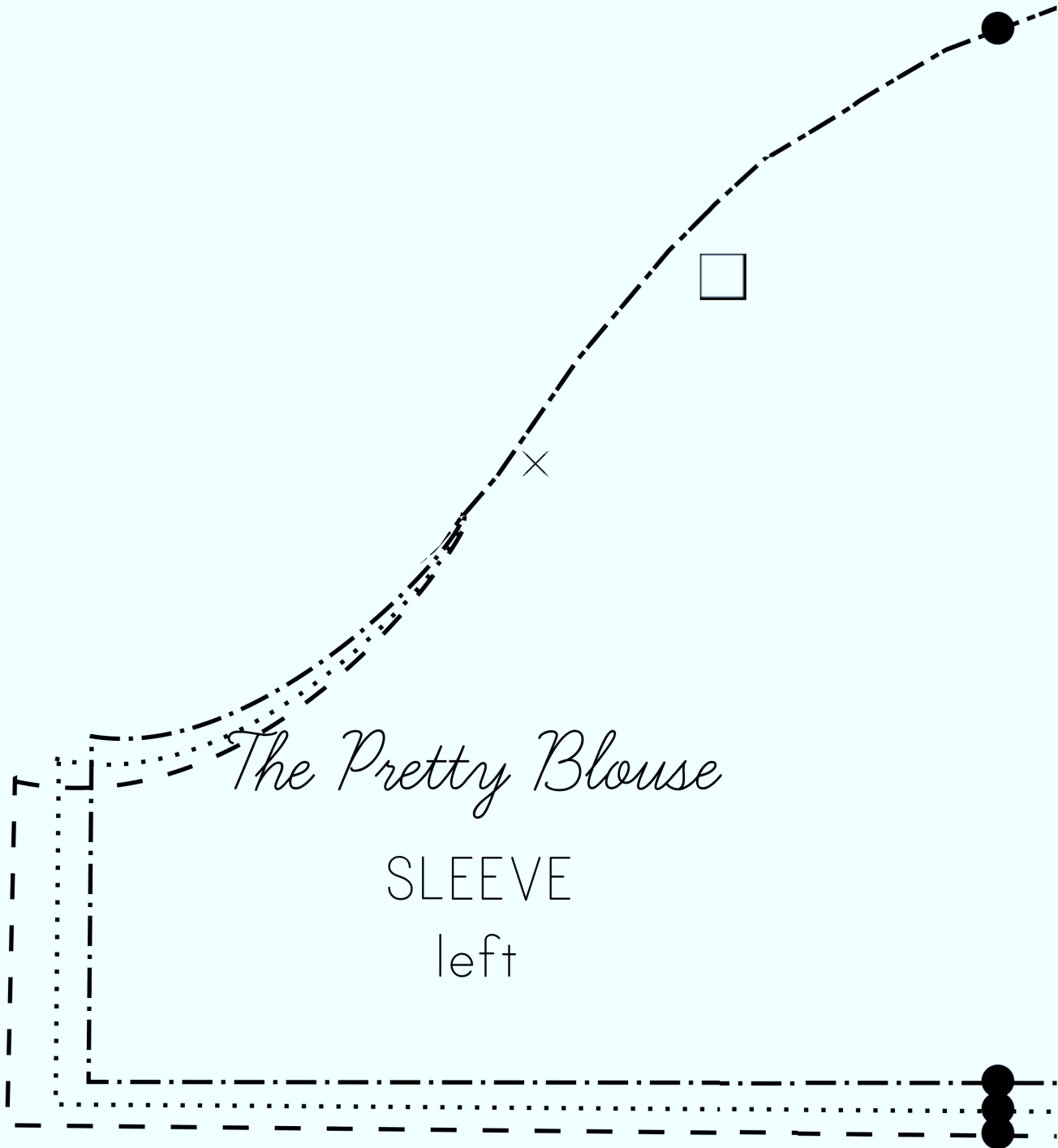
smooch smooch!



The Pretty Blouse

BACK BODICE

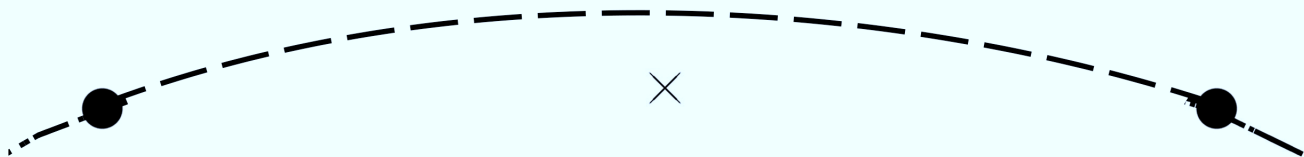
fold



The Pretty Blouse

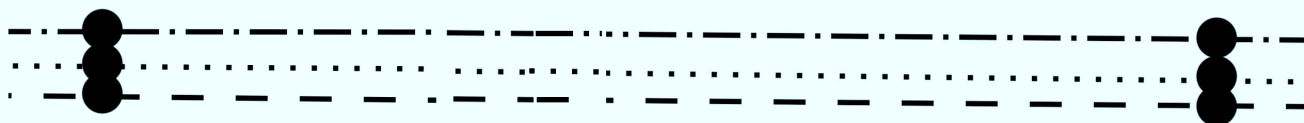
SLEEVE

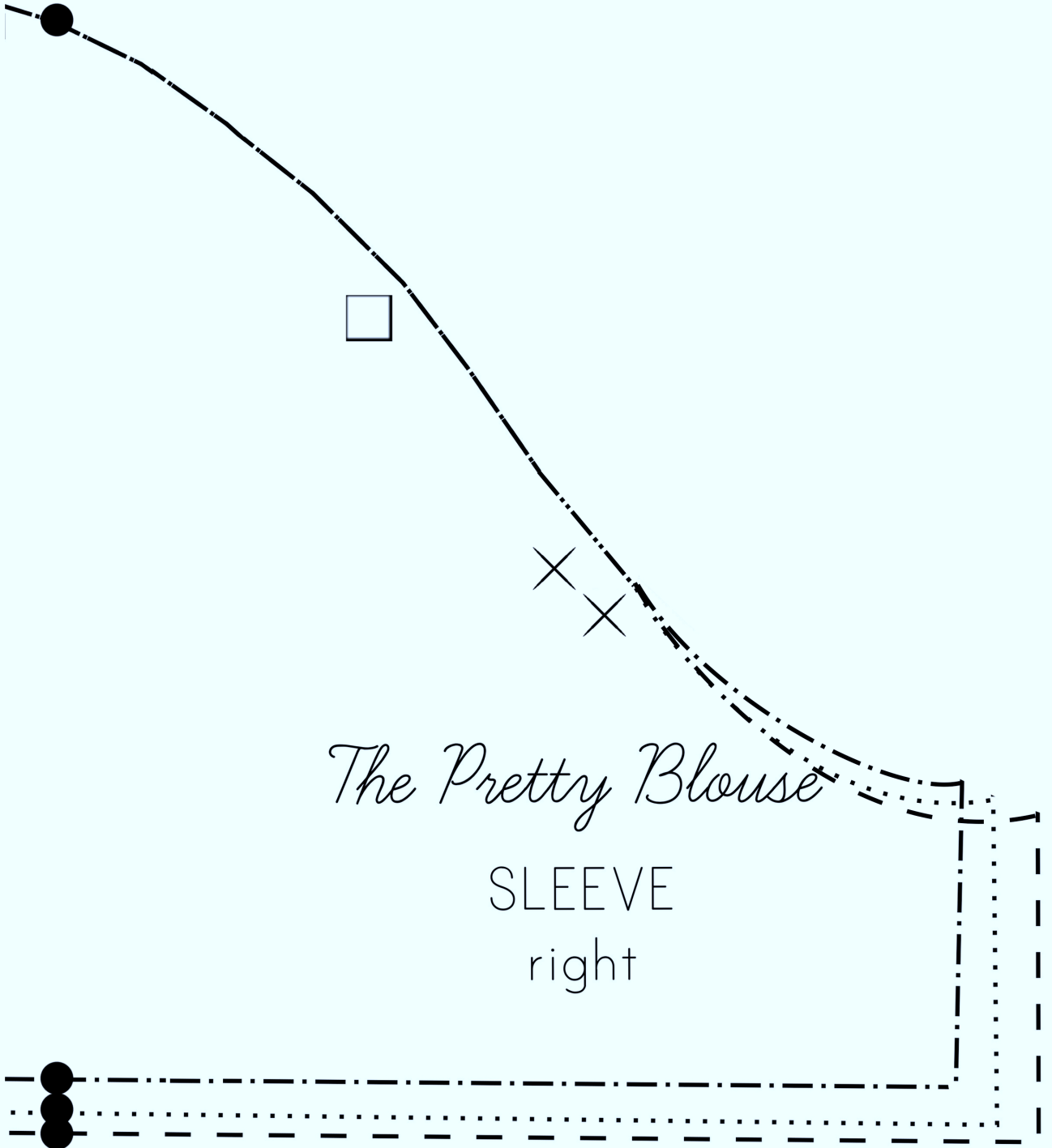
left



The Pretty Blouse

SLEEVE
center

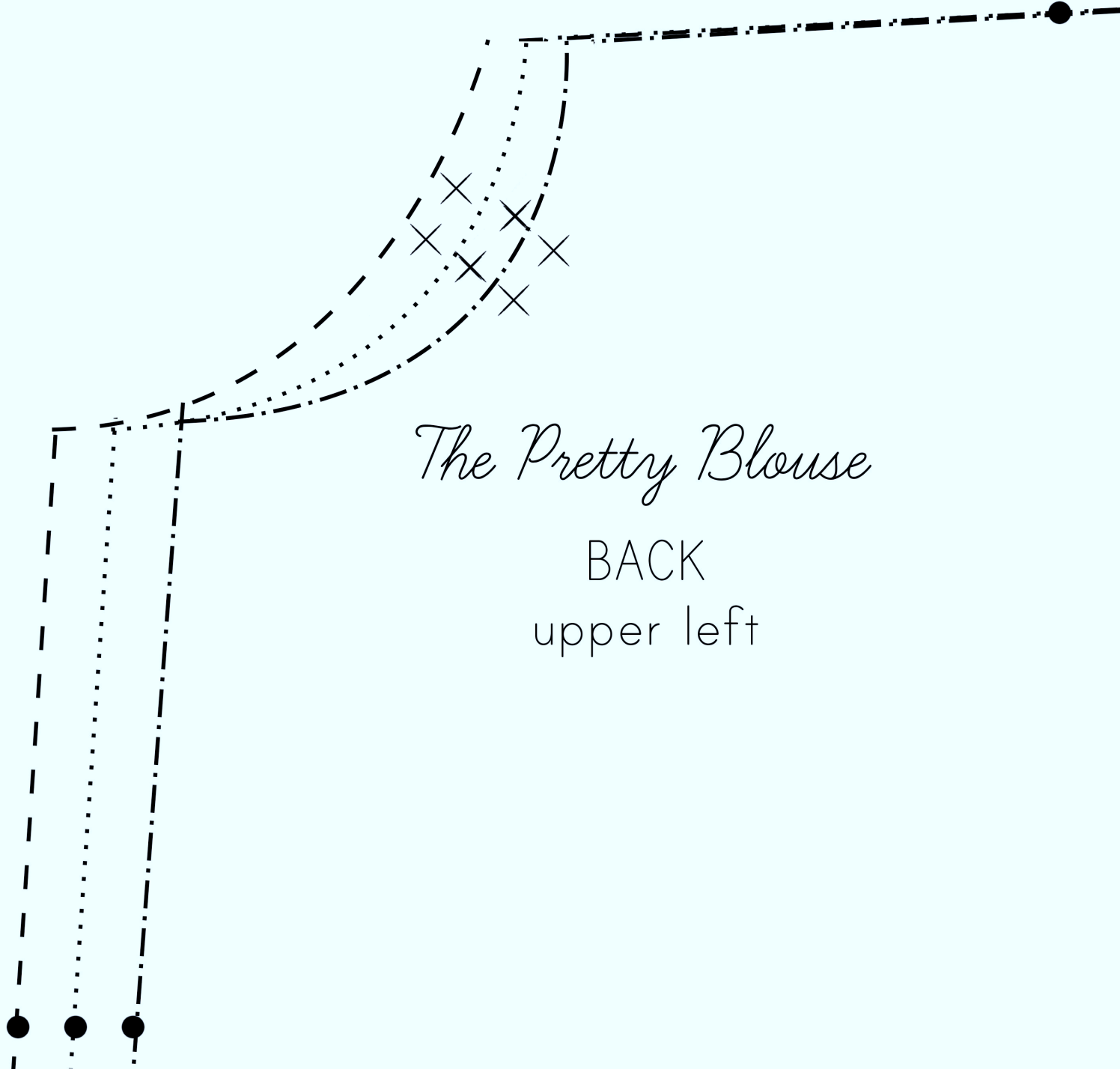




The Pretty Blouse

SLEEVE

right



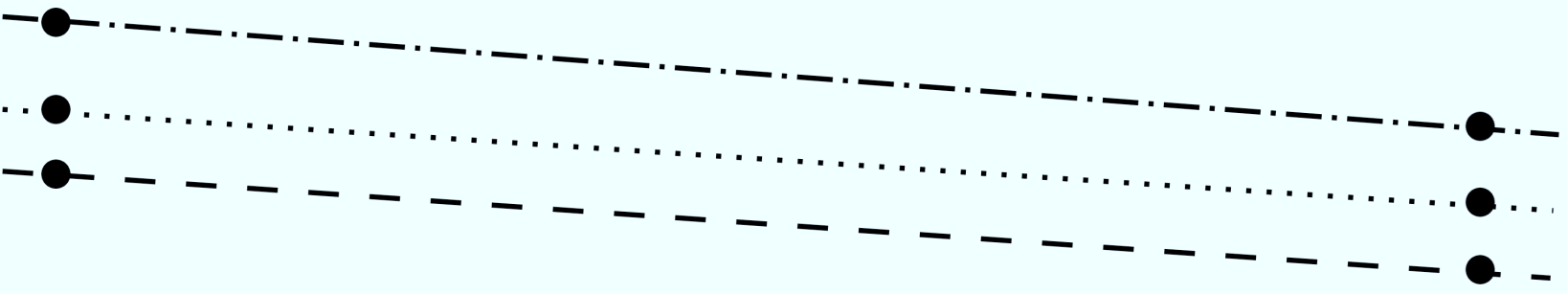
The Pretty Blouse

BACK
upper left

The Pretty Blouse

BACK

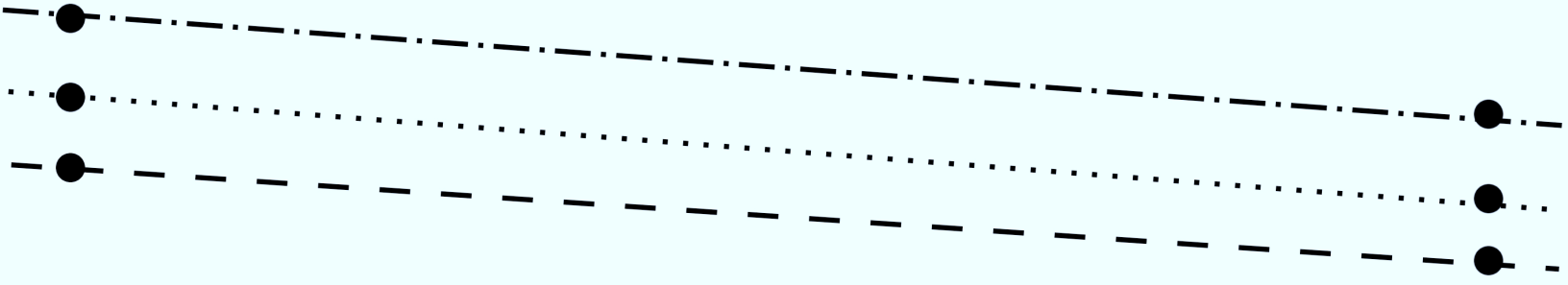
upper middle left



The Pretty Blouse

BACK

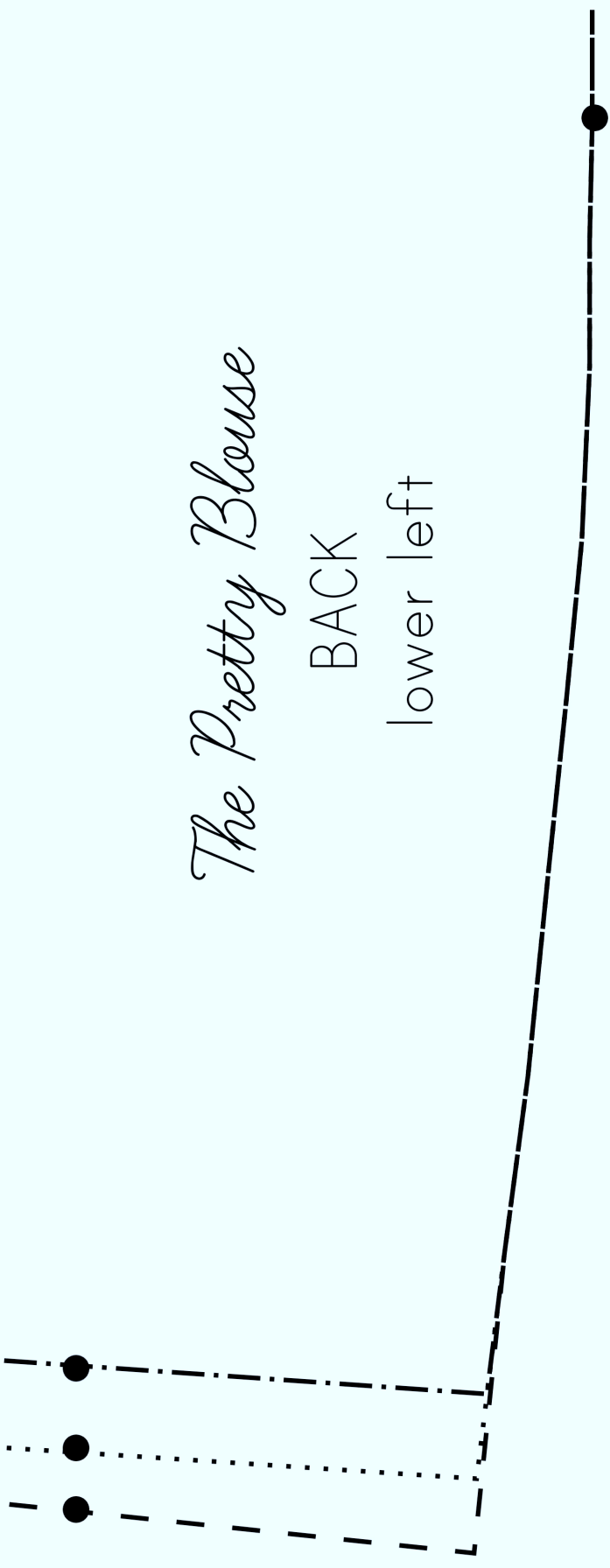
lower middle left

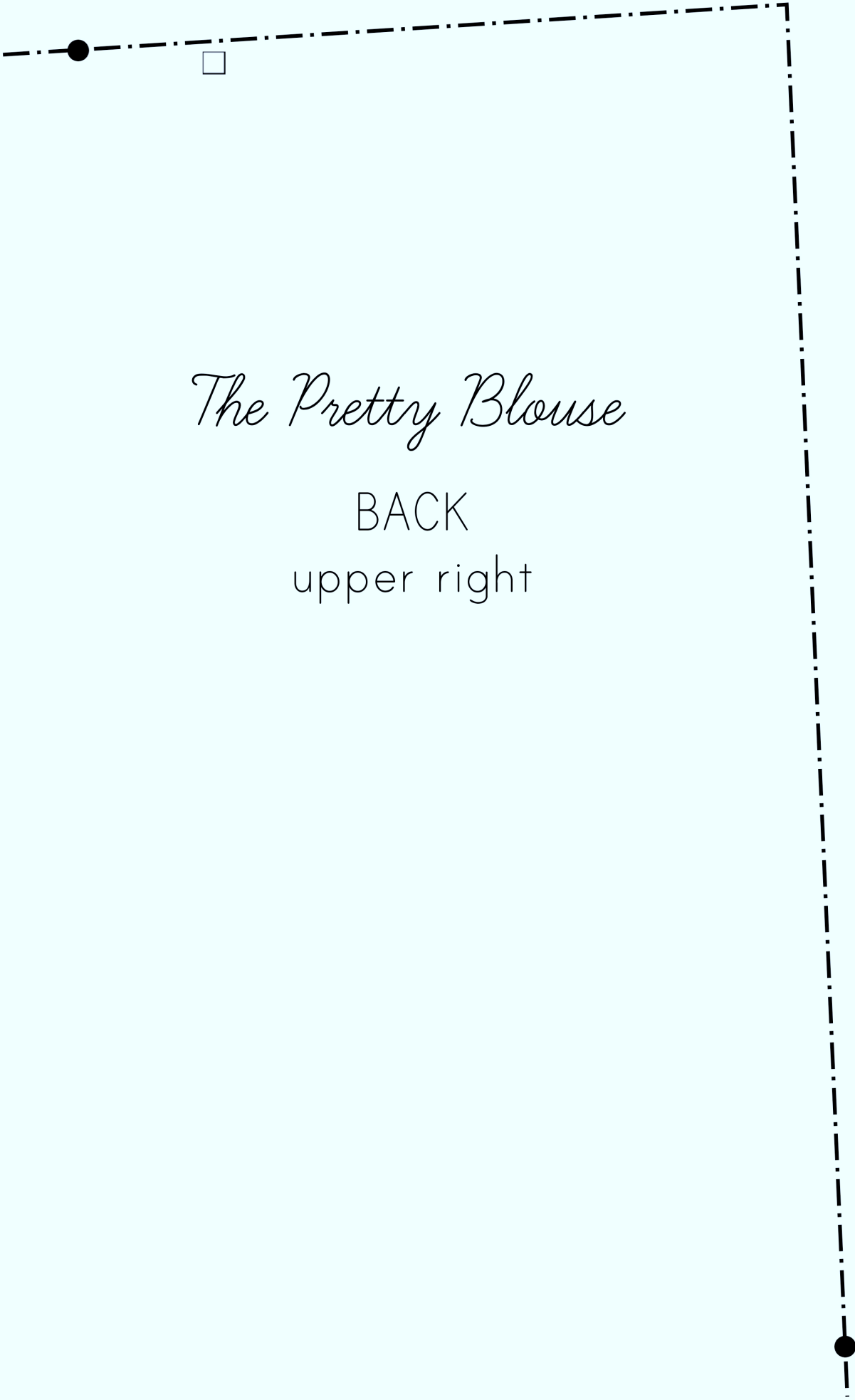


The Pretty Blouse

BACK

lower left





The Pretty Blouse

BACK
upper right

The Pretty Blouse

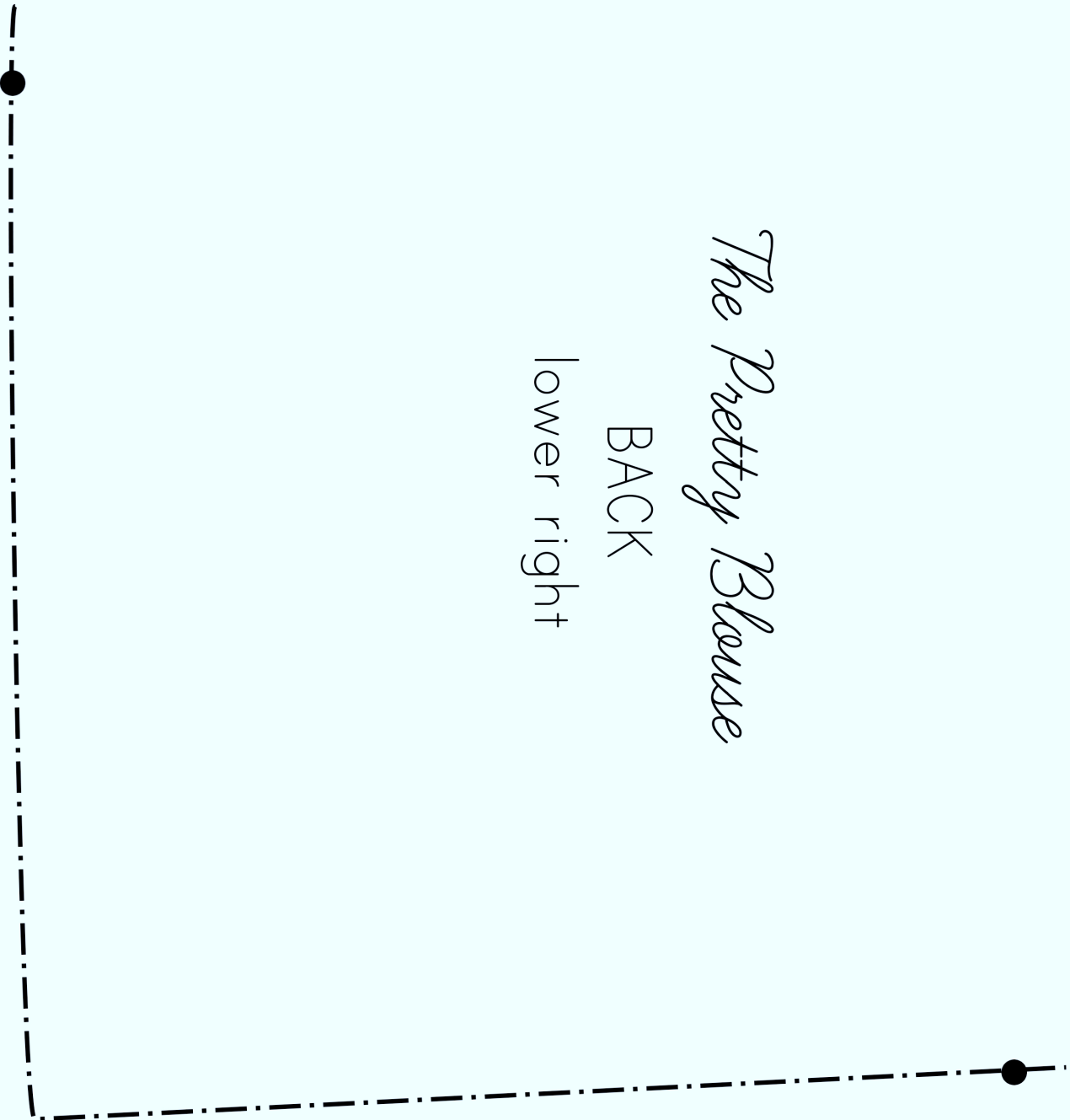
BACK
middle right

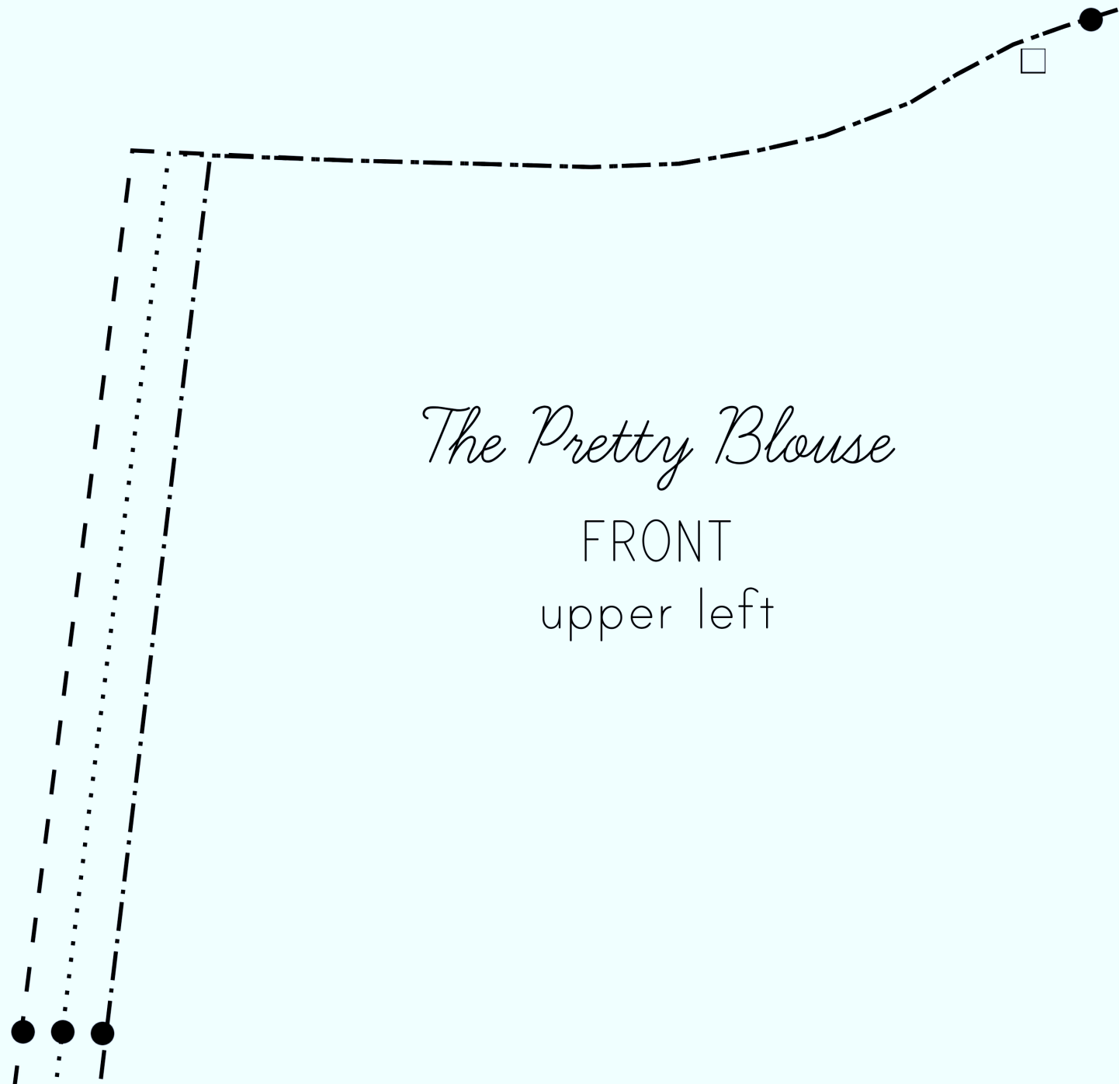


The Pretty Blouse

BACK

lower right

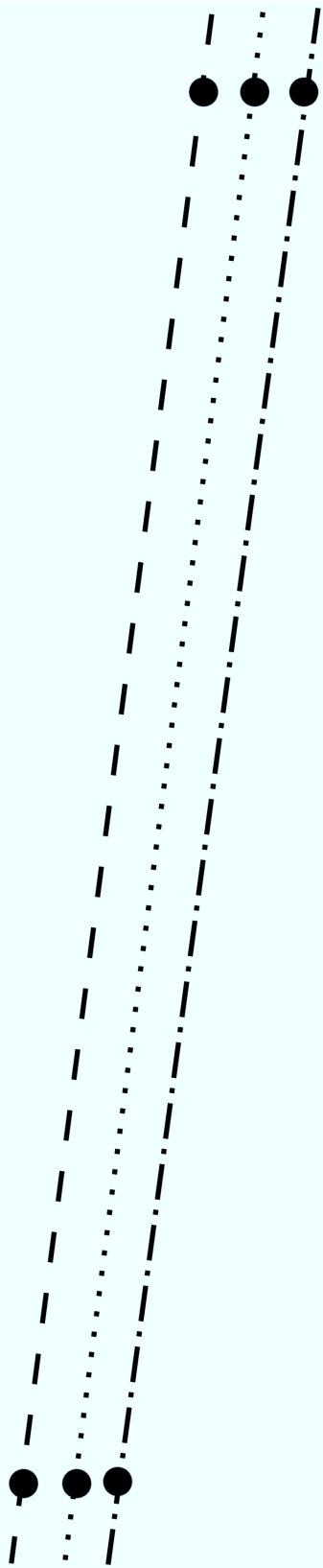




The Pretty Blouse

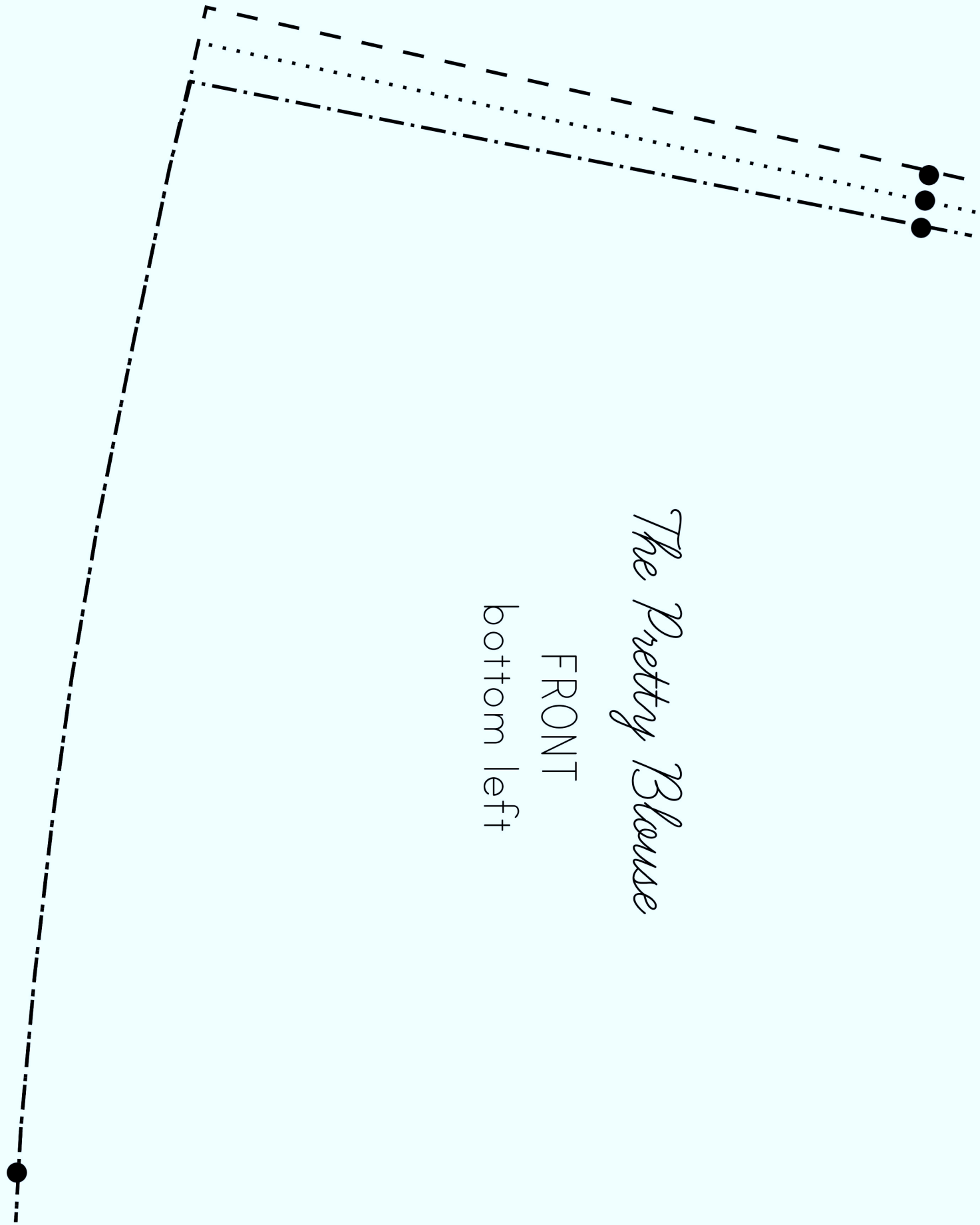
FRONT

upper left



The Pretty Blouse

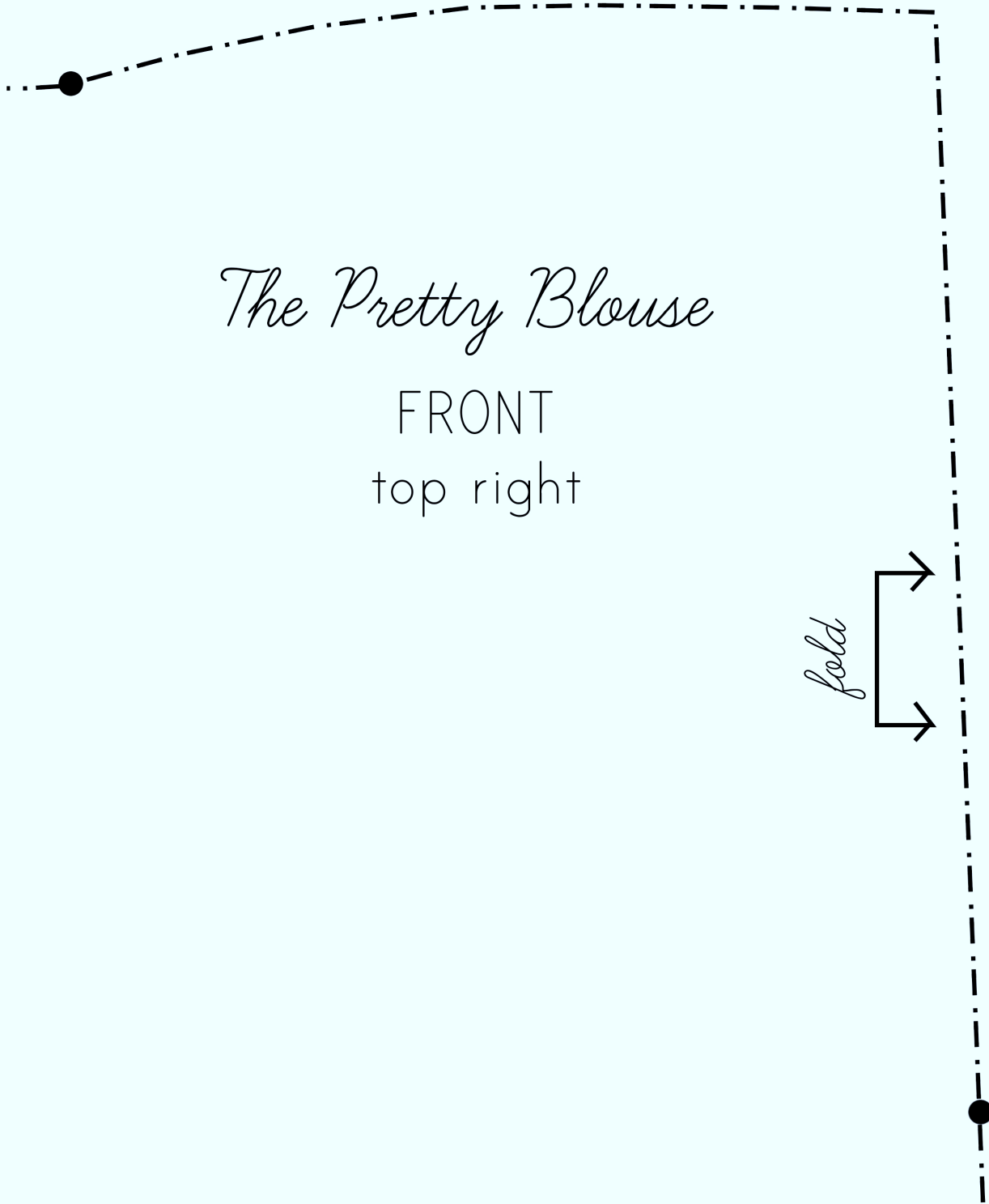
FRONT
middle left



The Pretty Blouse

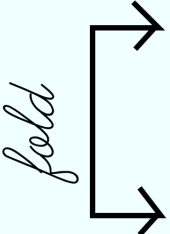
FRONT

bottom left



The Pretty Blouse

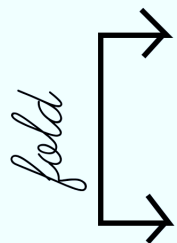
FRONT
top right



The Pretty Blouse

FRONT

middle right



The Pretty Blouse

FRONT

bottom right

