

# Tennis Bag Tutorial

for Sew Mama Sew

by Green Bag Lady  
(aka Teresa VanHatten-Granath)  
[www.greenbaglady.org](http://www.greenbaglady.org)







### Materials:

- sewing machine
- cutting mat
- ruler
- scissors
- rotary cutter (optional)
- straight pins
- small hair binder (sold at Walgreens, WalMart, Target, etc)
- 1 button, at least 1 inch in diameter
- 1 magnetic snap (sold in fabric stores or online)
- fabric (1.5 yards each of 2 coordinating prints/solids, 1 for outside and 1 for lining, outside fabric can be upholstery or canvas, 1/4 yd fabric for int. pockets)
- 2.5 yards fusible interfacing (I used Pellon Craft-Fuse 808)
- 1.5 yards, 1" wide handle strapping or webbing (usually sold by the yard at fabric stores)
- 1 inch biased tape maker (or premade biased tape)
- disappearing ink pen (found in notions section of fabric store)
- iron and ironing board



## Part I--Prepare Fabric + Interfacing

page 3



1) Cut 2 pieces of OUTSIDE fabric 20"X23"  
cut 3" notches out of both bottom corners

2) Cut 2 pieces of LINING fabric 20"X23"  
cut 3" notches out of both bottom corners



3) Cut 2 pieces of POCKET fabric 20"X20"  
cut 3" notches out of both bottom corners

4) Cut 2 pieces of fusible interfacing 20"X23" and  
1 piece 20"X20" Per manufacturer's instructions,  
adhere the interfacing to all pieces of outside fabric.

## Part II--Add Snap to Pocket Lining



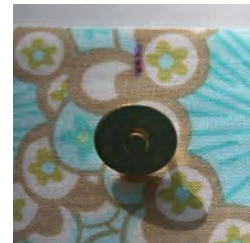
1) Make a mark at 10 inches  
on inside and outside of top  
of pocket lining piece.



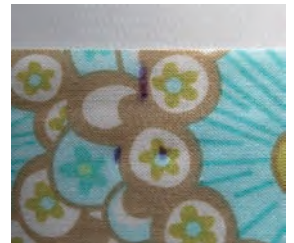
2) Cut 2 pieces of interfacing  
2 inches square. Gather the  
snap pieces.



3) Iron both  
pieces of interfacing to back of  
lining piece 1/2  
inch below mark.



4) Line up one part of  
the snap below mark  
on front of lining  
below mark. Press to  
make an impression.



5) Mark the impression  
with disappearing ink  
pen.



6) Using a seem ripper,  
carefully puncture  
2 holes through the  
fabric and interfacing  
at marks.



7) Push 1/2 of magnetic snap  
through the fabric and interfacing.



8) Flip fabric over and put one  
reinforcement disc on back of  
snap.



9) Using a pliers fold down  
prongs on both sides until  
they are flush with fabric.





1) Put interfaced pocket front on top of pocket lining *wrong* sides together.



2) Stay stitch around entire outside edge 1/8 inch from edge.



3) Prepare 45 inches of biased tape from lining fabric or use premade biased tape. Attach 21 in. of biased tape to top edge of pocket. If you are unfamiliar with making and using biased tape, there are several online tutorials.



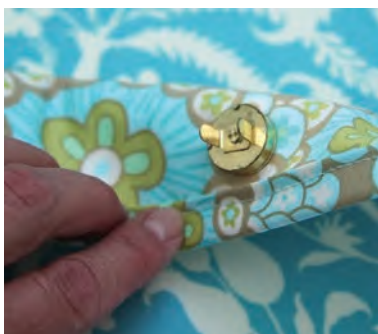
3) Finished biased tape and snap will look like this.



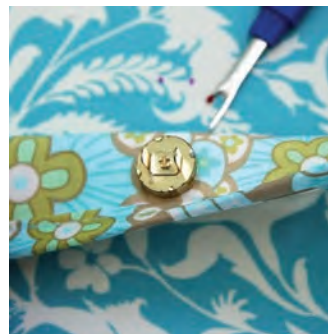
4) Place pocket piece on top of one of the front pieces.



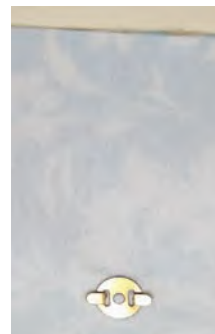
5) Pin in place and stay stitch down sides and bottom.



5) Following the same steps in Part II, line up and attach the other 1/2 of the magnetic snap to bag front.



6) Mark with dots again.



7) Back will look like this once you have snap on.



8) Finished snap will look like this. Pretty!





1) Place both outside pieces together, right sides facing.



2) Pin around edges of outside pieces.



3) Sew together on dotted lines as shown. DO NOT sew corners yet.



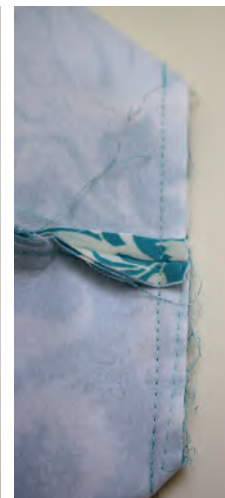
4) Use a 1/4 inch seam allowance.



5)--Pinch sides at corner to pull fabric apart, match up seams.



6) Pin.



7) Sew from one corner to the other.



8) The bottom of your bag will look like this so far.



9) Turn bag right side out.



10) Using a ruler at the top of bag, mark the middle with disappearing ink pen on front of bag. Pin binder to this mark. Make a mark 3 inches to the left and right of the center mark and pin your handles on. Stay stitch around entire top to secure binders & handles.





1) Decide how many and what kind of pockets you would like on the interior. Phone pocket measures 4wX4.5h inches. Ball/Water bottle pocket measures 7wX10h inches. Cut fabric and interfacing, iron on interfacing, sew biased tape on top of pockets. Surge sides and bottom of pockets OR cut the



pockets 4.5wX5h and 7.5wX10.5h and press sides and bottom under 1/4 inch.



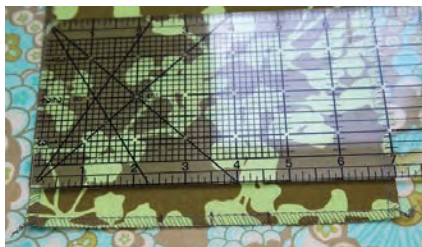
2) Make a mark on top of lining at 10 inches. Line up pocket 2 inches from top and 3 inches left of 10 inch mark.



3) All pockets should be 2 inches from top of lining.



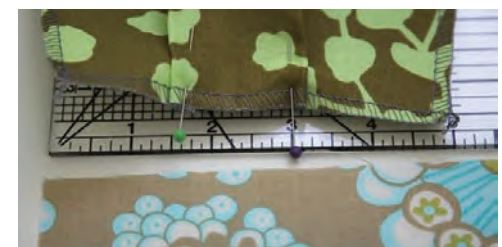
4) Finished phone pocket looks like this.



5) For the water bottle pocket, make a mark bottom at 2.5, 3.5 and 4.5 inches.



6) Pinch fabric at the 2.5 and 4.5 marks and pin.



7) After pinching, the bottom of the pocket should now measure 5 in.



8) Pin pocket to lining 3 in from left side. Make sure both sides are straight. The top of the pocket will stick out from lining fabric.



9) Again, make sure pockets line up 2 in from top of lining.



10) Sew on water bottle pocket to look like this.





11) If you would like a ball pocket on the other 1/2 of the lining repeat steps 8, 9, & 10. Pin pocket on left again so pockets are opposite each other in final bag.



12) Place lining pieces right sides together.



13) Pin and sew. Leave an unsewn 6 in. gap in bottom of lining to turn bag. Follow corner instructions 5, 6, & 7 in Part IV. DO NOT turn lining right side out.

## Part IV--Putting It All Together



1) Stuff entire outside of bag into bag lining. Make sure the handles are also inside of the lining.



2) Line up side seams.



3) Pin around entire top, then stitch around the top with a 1/4 seam allowance.



4) Pull outside of bag through opening in bottom of lining.



5) To look like this.



6) Pin and stitch opening in lining.





7) The top of your bag will now look like this.



9) Stitch around entire top of bag 1/8 inch from top to look like this.



8) Press and pin.



10) Sew button in place on back of bag and you are done. Enjoy!

Finished Bag!